

ODISHA
LIVELIHOODS
MISSION (OLM)

Video Conference on **NRLM**



26th March 2012



Panchayati Raj Department
Government of Odisha

Agenda for Discussion

NRLM Overview

Components under NRLM

Phase Out Plan

Districts & Blocks under NRLP /NRLM Intensive

HR Structure

Proposed Activity Plan in Districts

Proposed Budget

Action Points for Collectors

Aam Admi Bima Yojana

OLM-Overview

Vision

“By 2025, the rural people of Odisha live in a state of wellbeing and free from all forms of poverty and have the capacity to cope with all types of vulnerability”

Mission

“Ensuring sustainable livelihoods for the rural poor through improved access to financial, livelihood and other support services, with institutions of the poor playing a catalytic intermediating role”.

COMPONENTS-OLM

Social Inclusion, Mobilization & Institution Building

- **Mobilization of all rural poor households** into functionally effective, self-managed, self-governed institutions of poor SHGs and their federations.
- **Focus : more vulnerable sections** like scheduled castes, scheduled tribes, particularly vulnerable tribal groups, single women and women headed households, disabled, landless, migrant labour, isolated communities and communities living in disturbed areas.
- **Community mobilization through CRPs**, Wherever required services of NGOs and functionaries of existing programmes (Mission Shakti, OTELP, WORLP etc.) will be used for social mobilization.
- **Promotion of specialized livelihoods institutions** for deriving economies of scale, backward and forward linkages, and access to information, credit, technology, markets etc.
- **Capacity Building of Community and Staff.**

COMPONENTS-OLM

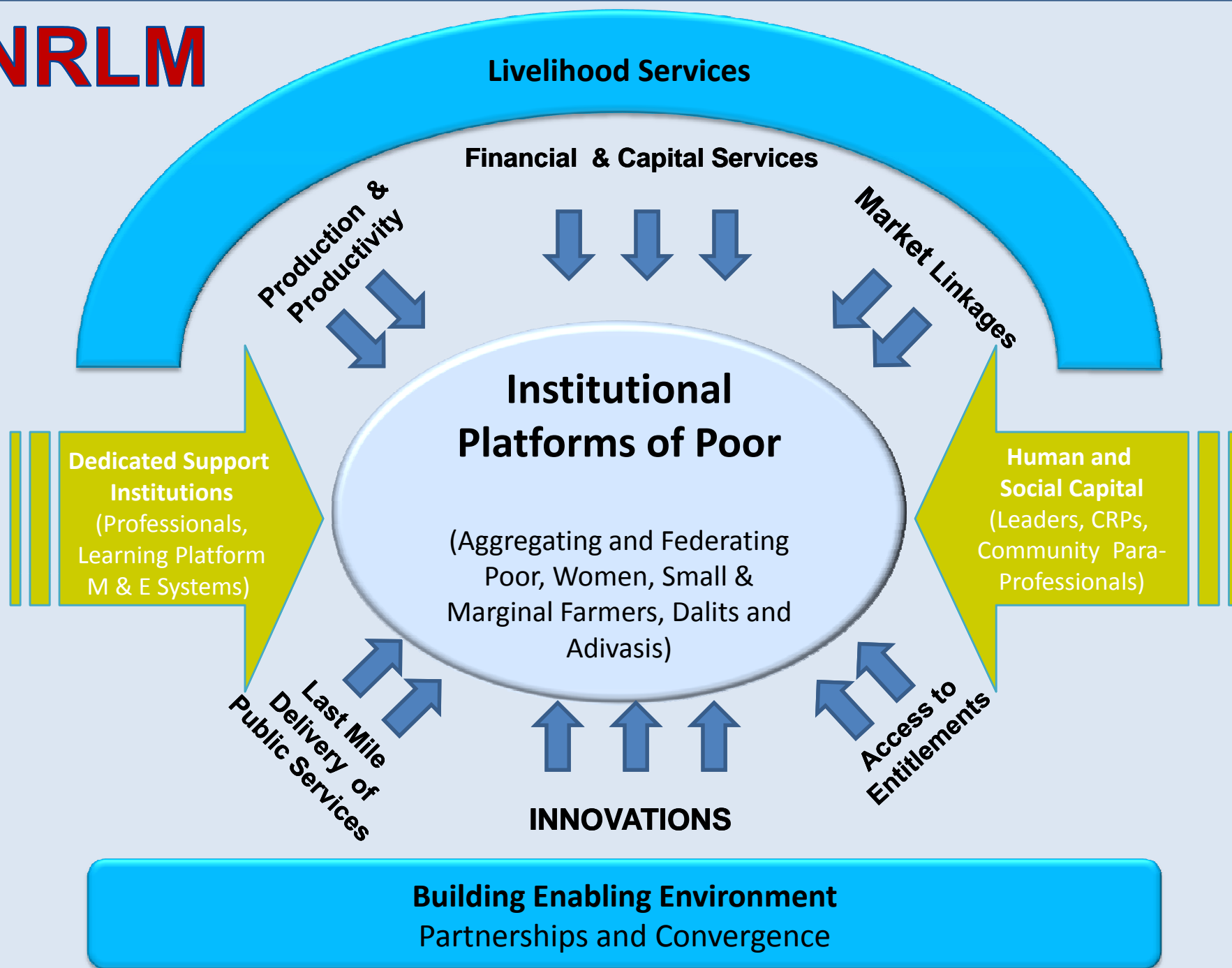
Financial Inclusion

- Opening of SB A/c of all SHGs/ individuals
- Managing thrift & credit
- Access to revolving fund
- Credit linkages with banks and FIs.
- Access to insurance services : client friendly business process to deliver insurance services.

Economic Inclusion

- **‘Vulnerability reduction’** and ‘livelihoods enhancement’ through deepening/enhancing and expanding existing livelihoods options and tapping new opportunities within the key livelihoods that are virtually universally practiced like agriculture, livestock, fisheries, forest produce collection, etc.;
- **Enhancing ‘Employability’** - building skills for the job market:
- **‘Enterprises’** - nurturing self-employed and entrepreneurs (micro-enterprises).

NRLM



Preparedness Under OLM

- Launching **NRLM-Odisha** by Hon'ble Chief Minister.
- Preparation of Draft State Perspective & Implementation Plan and submission to MoRD.
- Submission of Annual Action Plan : 2012-13 to MoRD.
- Opening of SB Account
- Receipt of 1.5 crore for Preparatory work of NRLM from Gol .
- Exposure visit of Collectors, PD DRDAS and BDOs to SERP-Andhra Pradesh.

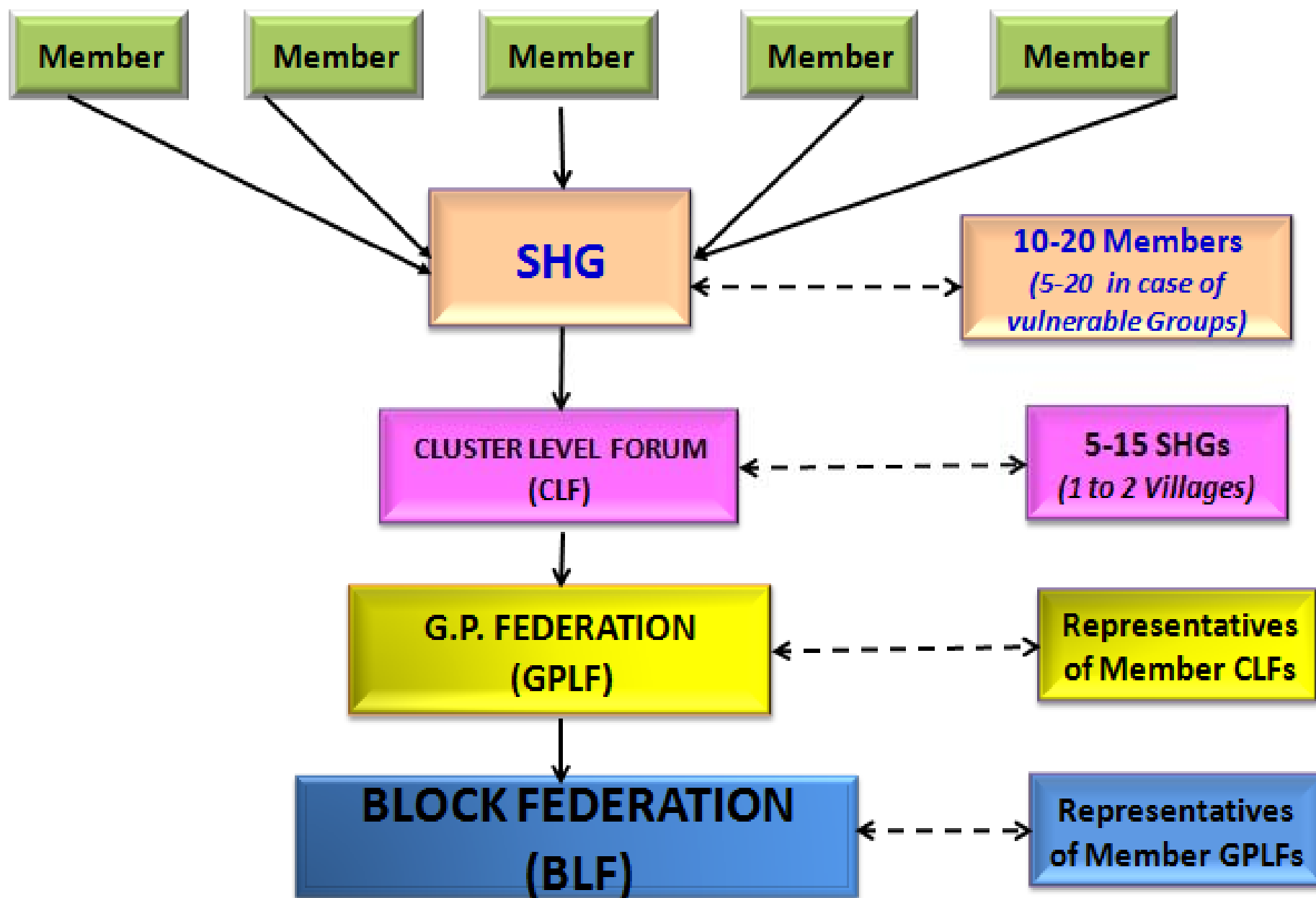
PHASE OUT PLAN

Phases			Phase-I	Phase-II	Phase-III	Phase-IV	Total	
Unit			Districts	Districts	Districts	Districts	Districts (Cumulative)	Blocks (Cumulative)
Blocks	District		10	5	7	8	30	
	Year-I	(2012-13)	40				10	40
	Year-II	(2013-14)	40+88	20			15	148
	Year-III	(2014-15)	40+88	20+28	28		22	204
	Year-IV	(2015-16)	40+88	20+28	28+28	32	30	264
	Year-V	(2016-17)	40+88	20+28	28+28	32+50	30	314
Total			128	48	56	82	30	314

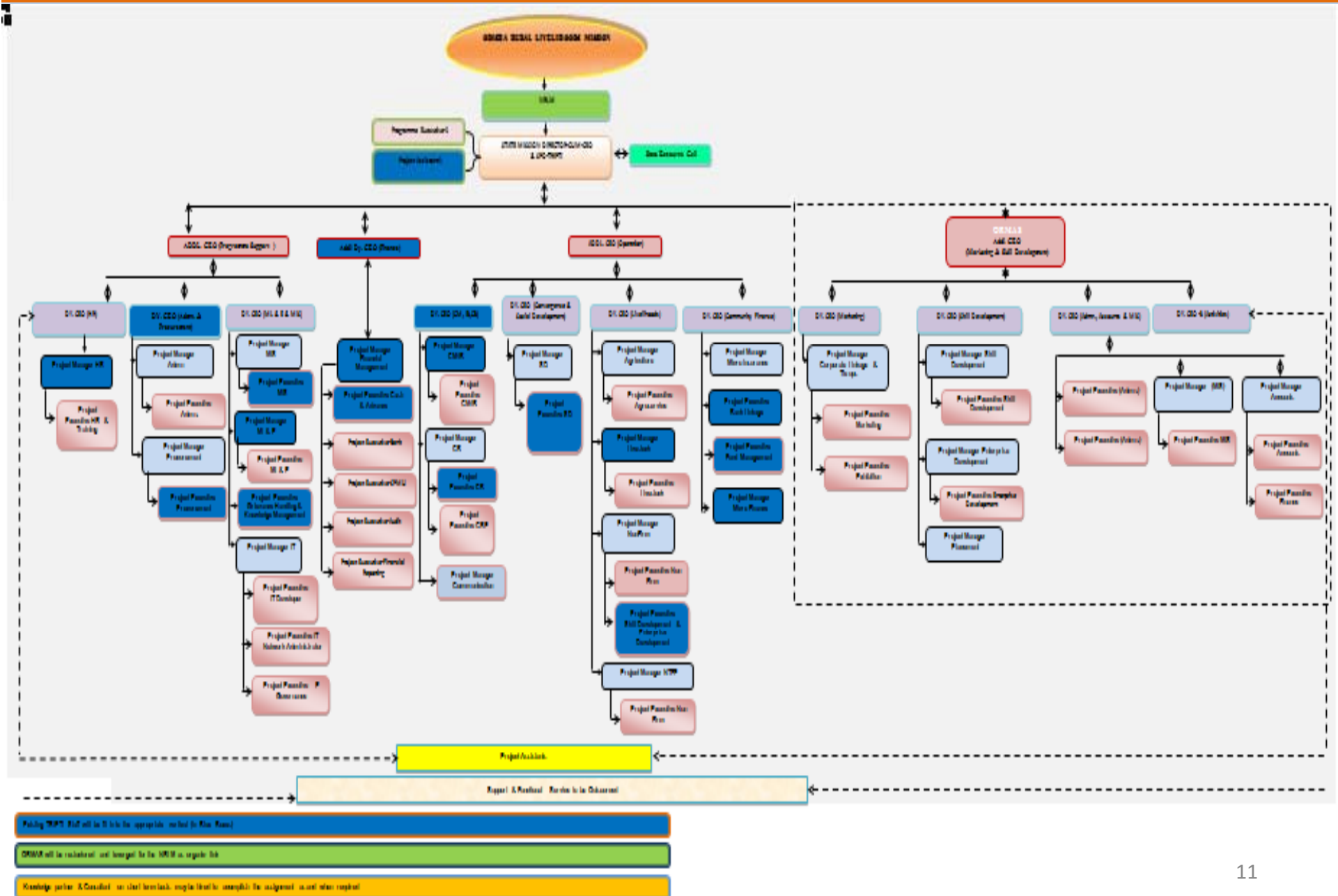
Intensive Blocks under OLM (2012-13)

DISTRICTS	BLOCKS
Deogarh	Barkot, Tileibani, Reamal
Gajapati	Raygada, Guma, Nuagada, R. Udaygiri
Ganjam	Chikiti, Jagannathprasad, Shergarh, Sorada
Kandhamal	Baliguda, Chakapad, Daringbadi, Phulbani
Koraput	Boriguma, Laxmipur, Kotpad, Koraput
Malkangiri	Khairput, Kudmulguma, Malkangiri, Matheli
Mayurbhanj	Bangiriposi, Jasipur, Karanjia, Kusumi, Morada
Rayagada	Bisamcuttack, Chandrapur, Kasipur, Muniguda
Sambalpur	Bamra, Jamankira, Jujumura, Kuchinda
Sundargarh	Gurundia, Kuarmunda, Kutra, Rajgangpur
Total	40

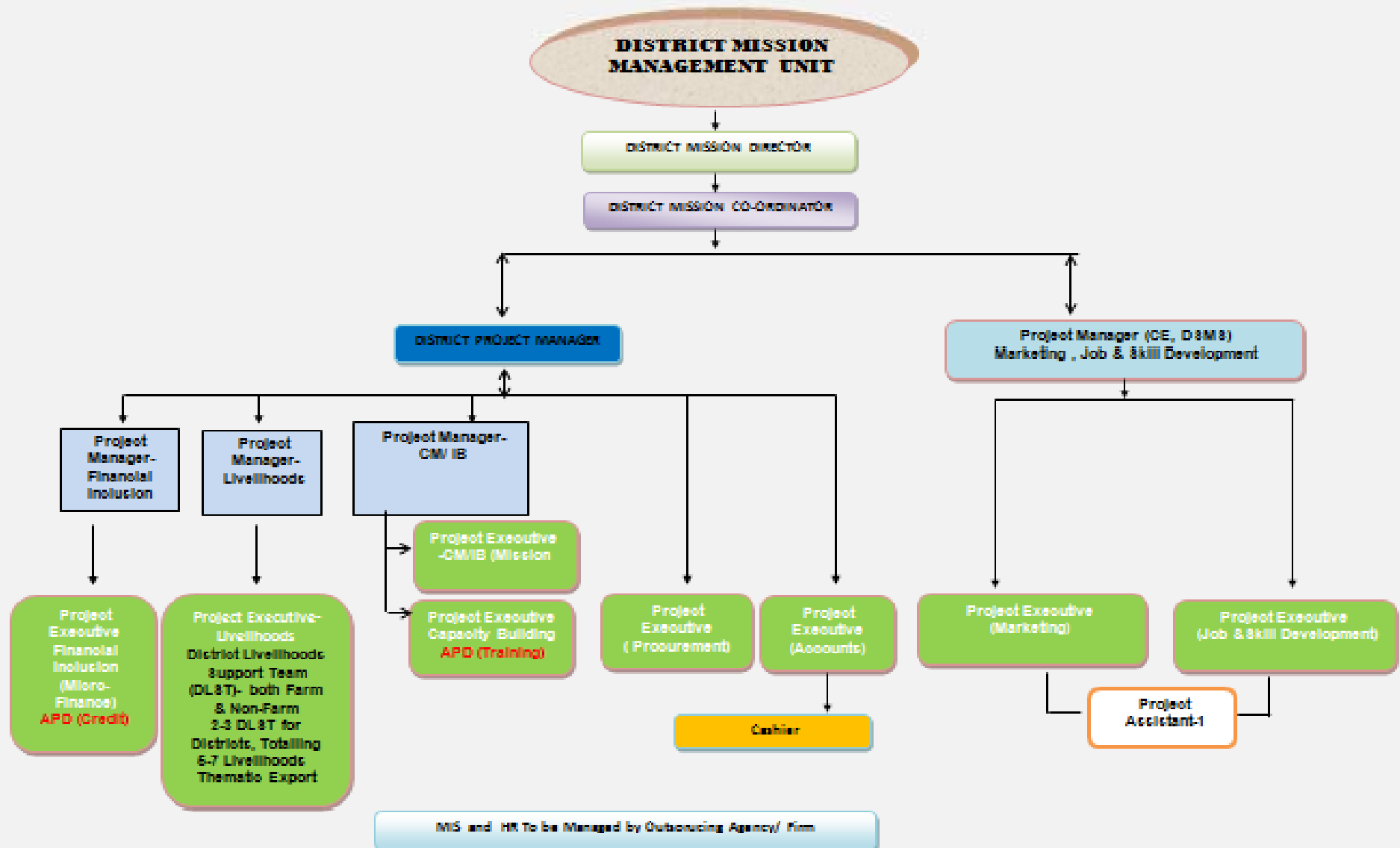
Structure of Community Level Institutions



Organogram-State



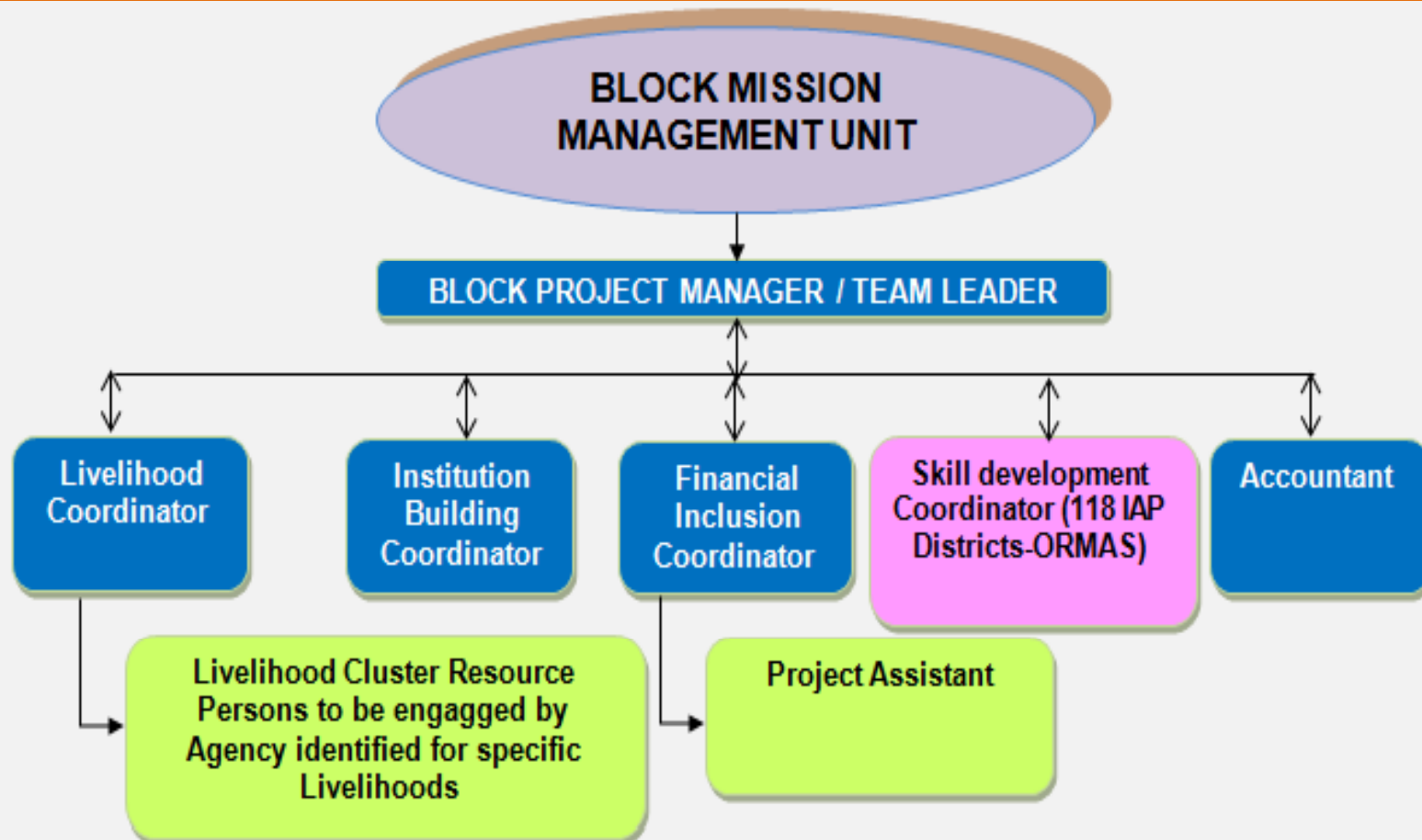
Organogram-District



808Y Staffs placed at DRDA may be suitably fit in to the District structure and DPM for 20 Districts may be placed from Government based on the matching profile

DPM, TRIPDI will be observed as DPM, NALM in the 10 TRIPDI Districts

Organogram-Block



Existing BPFT Staff in 38 TRIPTI Blocks will fit into the appropriate vertical in blue boxes

Progressive Assistant/ GPEO/ WEO from Government may be placed in the Block Structure other than the TRIPTI Blocks

The Services of Institution Building Specialist hired by the Mission Shakti may be utilised for the Block Function other than the TRIPTI Blocks

Recruitment of Staff : Year Wise

Year	District	Block	SMMU							DMMU						BMMU				Total Professional Requirements
			CE O	Ad dl. CE O	Dy. CEO	Project Manag er	Project Executi ve	Progra mme Executi ve	Project Assist ant	District Mission Director	District Mission Coordinator	District Project Manager	Project Manager	Project Executi ves	Cashi er	Block Project Manager	Coordina tors	Account ant	Project Assist ant	
No per unit			1	3	7	17	25	1	9	1	1	1	3	8	1	1	3	1	1	
2012-13	10	40	1	3	7	17	25	1	9	30	30	10	30	80	10	80	240	40	40	869
												20				196				
2013-14	5	108											15	40	5		264	108	108	540
2014-15	7	56											21	56	7		192	56	56	388
2015-16	8	60											24	64	8	38	96	60	60	350
2016-17		50															150	50	50	250
Intensiv e Total			1	3	7	17	25	1	9	30	30	10	90	240	30	118	942	314	314	
Non-Intensiv e Total			0	0	0	0	0	0	0	0	0	20		0	0	196	0	0	0	
Year-wise Total			1	3	7	17	25	1	9	30	30	30	90	240	30	314	942	314	314	2397

Proposed Activities in Districts - NRLM Intensive

- **Identification of staff to carry out the preparatory activities**
 - DRDA staff like **APD, Training; APD, Credit** to be engaged at the district level.
 - At the block level the **Mission Shakti Coordinators and PA** to be engaged.
 - **Young Professional** to be engaged/ **YP Policy**
 - **Services of existing staff of various other programmes** like OTELP/ OFSDP/Mission Shakti, WORLP will be utilized at district and block level, pending the dedicated structure
 - **Spearhead teams of TRIPTI to be deputed** for a certain period for providing technical assistance /capacity building /handholding support
- **Preparation of District PIP**

Proposed Activities in Districts- - NRLM Intensive

- 2 days District Planning and Consultation Workshop
- **Orientation to Staff**
 - A **three days orientation will be conducted at the state level** for the key staff at district and block level on NRLM implementation and project cycle.
 - **15 days immersion at TRIPTI districts/block** to understand entire process of project implementation
 - **2 Days refresher programme at the state** to share their learning and preparing next course of action
- **Exposures**
 - The **District Collectors; PDs, DRDA , BDOs and other district and block level officers** engaged for NRLM will be sent on exposure to similar livelihoods project outside the state like AP, Tamil Nadu, Bihar etc.
 - The **APDs (Trg) of 10 DRDAs to be sent to Tamilnadu** to understand their capacity building strategy of CPLTC to set up the district resource centre
 - **Bankers from 10 districts to be taken to SERP, AP** for a better learning and understanding of the credit linkage programme.

Proposed Activities in Districts- - NRLM Intensive

- Office Set Up
 - **Office space to be located** for DMMU and BMMU in 10 districts and 40 blocks respectively.
 - Initiatives to be taken for refurbishment of office and procurement of required furniture, fixture, computer etc.
- Setting up of DRC
- Identification of **Resource Blocks**: 10 blocks from 10 1st phase districts.
- Implementing **External CRP strategy**: In 4 Resource blocks
- Identification of **Nodal Office for each district** for NRLM.

Proposed Activities in Districts- - NRLM Intensive

- Financial Inclusion
 - **Financial literacy** to all households
 - Regular interaction and follow up with Banks
 - Introducing **Bank Mitra and Bima Mitra**
 - **Mobile banking** services.
 - **Capacity building** of stakeholders
 - ICT for providing faster financial services : piloting m-governance at CBO level, banking touch point (BC model)
 - **Resource Convergence** with other departments to maximize financial access of the poor.
 - **Membership in CLCC, SLBC, DCC, BLCC.**
 - Tie up with banking institutes like BIRD, Lucknow for innovation and capacity building
 - **Interest subsidy** to SHGs on timely repayment of loan

Proposed Activities in Districts- - NRLM Intensive

- **Skill Development**

- Unemployed youth will be identified and tagged under the existing schemes and programmes run by ORMAS and Employment Mission for the placement linked skill development programme.

- **Livelihoods Pilots**

- Few livelihoods pilots will be initiated in selected primary sectors like agriculture, livestock, NTFP etc. In other places existing livelihoods clusters will be promoted.

Proposed Activities in Districts- NRLM Non-Intensive

- Identifying officers at district and block level responsible to implement NRLM.
- **Training to all staff** in cascading approach.
- Capacity building and **basic orientation training** to grade-I pass SHGs
- Facilitating **credit linkage of SHGs** with banks
- **Interest subsidy** to SHGs on timely repayment of loan
- Handholding to SHGs to **develop Micro-enterprise** .
- Placement linked **skill development for rural youth**.
- Promotion of **existing livelihood clusters**.

Proposed Budget (Amount in Lakh)

	NRLP/ NRLM Intensive	Per district/ block allocation	NRLM- Non Intensive	Per district/ block allocation	Total
SMMU	1256.45				1256.45
DMMU	4742.46	474.25	12177.4	608.87	17394.11
BMMU	4562.84	114.07	1461.16	6.19	6138.07
Total	10561.75		13638.56		24200.31

Proposed Budget under different Heads (Amount in Lakh)

Budget Heads	NRLP	NRLM Intensive	NRLM Non-Intensive	Total
Institution Building	3968.91	1588.93	3941.16	9499.00
Financial Inclusion	1252.00	513.00	5540.00	7305.00
Economic Inclusion / Livelihoods Promotion	649.90	283.10	3805.00	4738.00
Project Management	1785.57	350.34	522.40	2658.31
Total	7656.38	2735.37	13808.56	24200.31

Action Points for Collectors

- To ensure that SGSY programme is merged with NRLM without any liability and disruption.
- Identify the team for NRLM for district and block level.
- Designate one district level officer as Nodal Officer to look after NRLM affairs.
- Conduct district level workshop on 1st week of April 2012 in 10 intensive districts. Other districts to communicate the date.
- Office space to be located for DMMU and BMMU in 10 districts and 40 blocks respectively. Required arrangements to be made for office set-up.
- Identification of 10 Resource Blocks from 10 Districts.
- Providing required support for fine-tuning of district PIPs

Aam Admi Bima Yojana

- **MoU signed** between NRLM-Odisha and LIC of India to roll out AABY in Odisha on 19th Dec 2011.
- In the first phase **2 lakh households, completed 100 days work in MGNREGA** in the financial year 2010-11 are covered under AABY.
- For the time being **NRLM-Odisha will be the Nominee** till the actual nominee is substituted for the member(s).
- **Benefits under AABY**
 - On **natural death- Rs.30,000/-**.
 - On **death and permanent disability due to accident- Rs.75,000/-**
 - **Partial disability due to accident - Rs.37,500/-**.
 - **Scholarship at the rate of Rs.100/- per month** to maximum two children studying between 9th to 12th Standard, payable half yearly.

Aam Admi Bima Yojana : Action Points

Activities	Responsibility	Time line
Submission of Beneficiary list from NREGA data base to LIC	SPMU- TRIPTI	23 rd March
Issuance of master policy number and hosting in PR/TRIPTI web site (www.tripti.org)	LIC and SPMU, TRIPTI	31 st March
Issue of Certificate of insurance by LIC to SPMU TRIPTI	LIC	10 th April
Nominating APD (Credit),DRDAs in non-TRIPTI districts and DPM-TRIPTI in TRIPTI Districts as nodal person for AABY	Collectors and PD DRDA	31 st March
Identification and recommendation of two master trainers from each districts	Collectors and PD DRDA	31 st March
Organizing State level ToT on AABY for master trainer	SPMU, TRIPTI	14 th April
Distribution of certificate of insurance of beneficiaries to districts	SPMU, TRIPTI	15 th April
BDOs in non-TRIPTI districts and BPFTLs of TRIPTI Blocks may be nominated as anchor/authorized person	BDOs	14 th April
To organize district level sensitization workshop for BDOs/ABDOs, District MC (MGNREGA), APOs (MGNREGA), APDs (DRDA), DWO/DSWO, all BPFT staff of TRIPTI etc. (Resource Persons- Trained Master trainers)	Collectors and PD DRDAs	20 th April
To organizing Block level sensitization workshop for all GRSS(MGNREGA)/ CCs of TRIPTI	BDOs	25 th April

Aam Admi Bima Yojana

Activities	Responsibility	Time line
Distribution of certificate of insurance to all beneficiaries and Collection of the required information (with signature of beneficiaries) in the prescribed pro-forma. GRSs/CCs will collect the date and submit to the nodal person at Block	Under the super vision of BDOS.	30 th April
The application for scholarship will be collected by GRSs/CCs and submitted to SMMU-OLM, duly signed by nodal officer in hard copy form. One copy of application will be retained at block office. The summary of scholarship in soft and hard copy to be sent to SMMU.	PD DRDAs/BDOs/Nodal persons	10 th May
Information in the hard copy to be retained at Block office and soft copy submitted to SMMU	Computer Programmer, APOs (MGNREGA), BPFTLs, TRIPTI	15 th May
ABDOs in non-TRIPTI blocks and BPFTLs in TRIPTI blocks will recommend all claims papers to SMMU.	Under the supervision of BDOs	As and when basis
MIS on AABY will be maintained at state, district and block level.	SPMU, TRIPTI/DRDA/Blocks	Regularly
Grievance Handling at all level	SMMU-OLM at state level, Collectors at District level and BDOs at Block level	As and when basis



T
H
A
N
K

Y
O
U